

Question : How do I configure my floating license manager?

Answer :

Floating License Manager /Server

License Request:

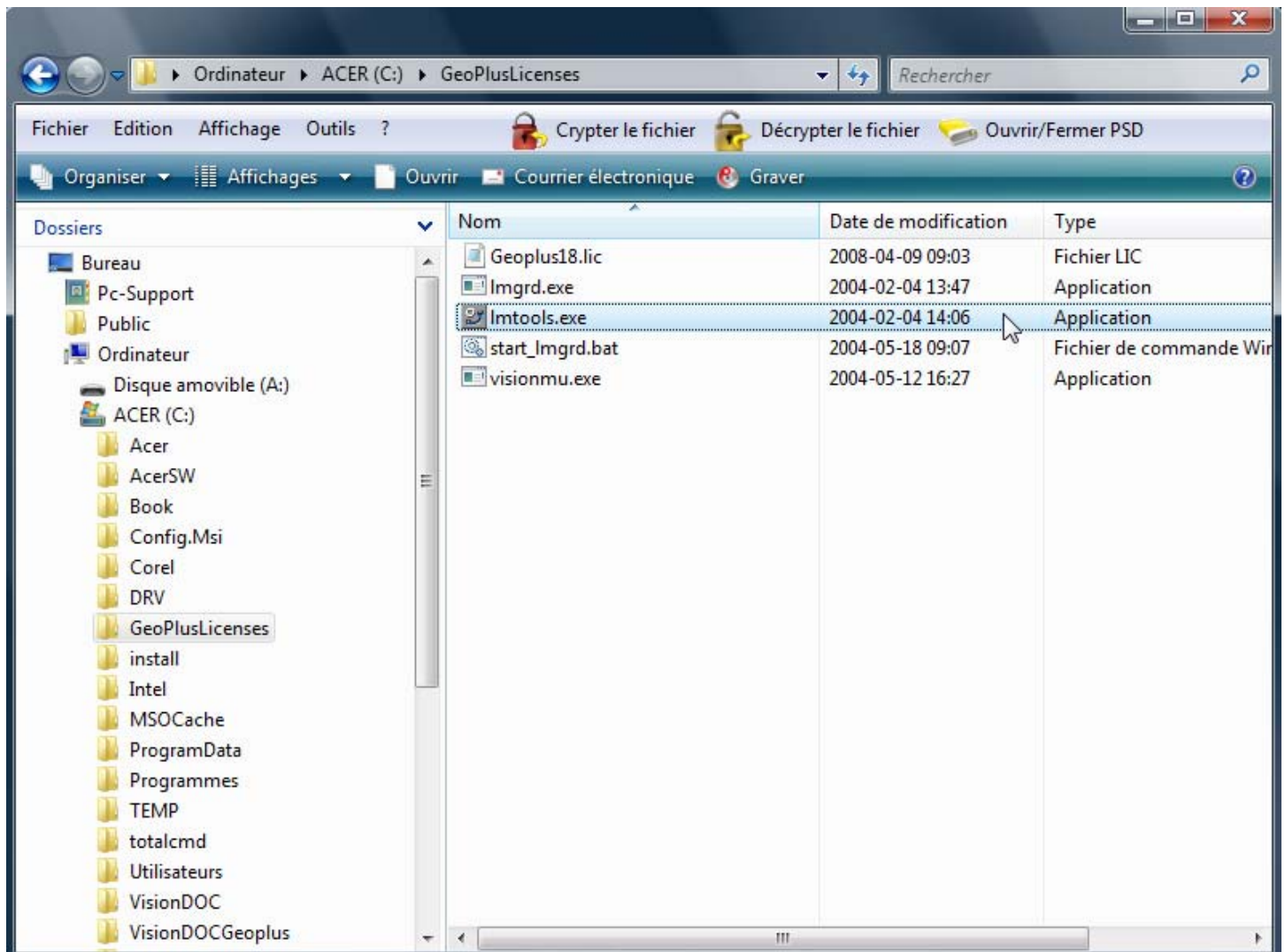
A license must be created specifically for your server. Name, surname, company, telephone and the **name of your server** must be given by email to the following address : support@geo-plus.com and your license will be sent to you shortly by email.

License server installation :

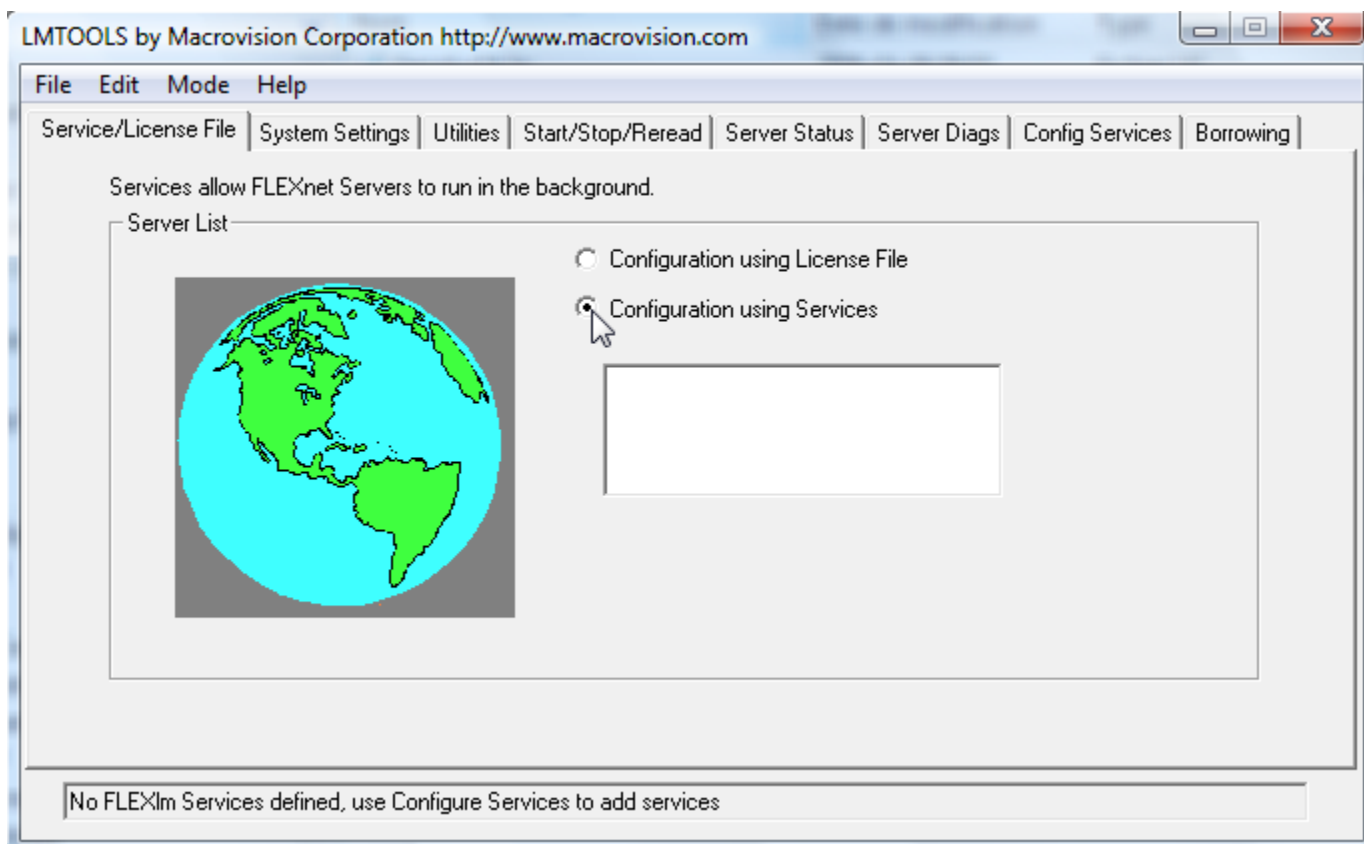
Start the GeoPlusLicense.exe installation. You can install the server in any directory. The directory must be accessible by all PC's requiring a license.

License server configuration :

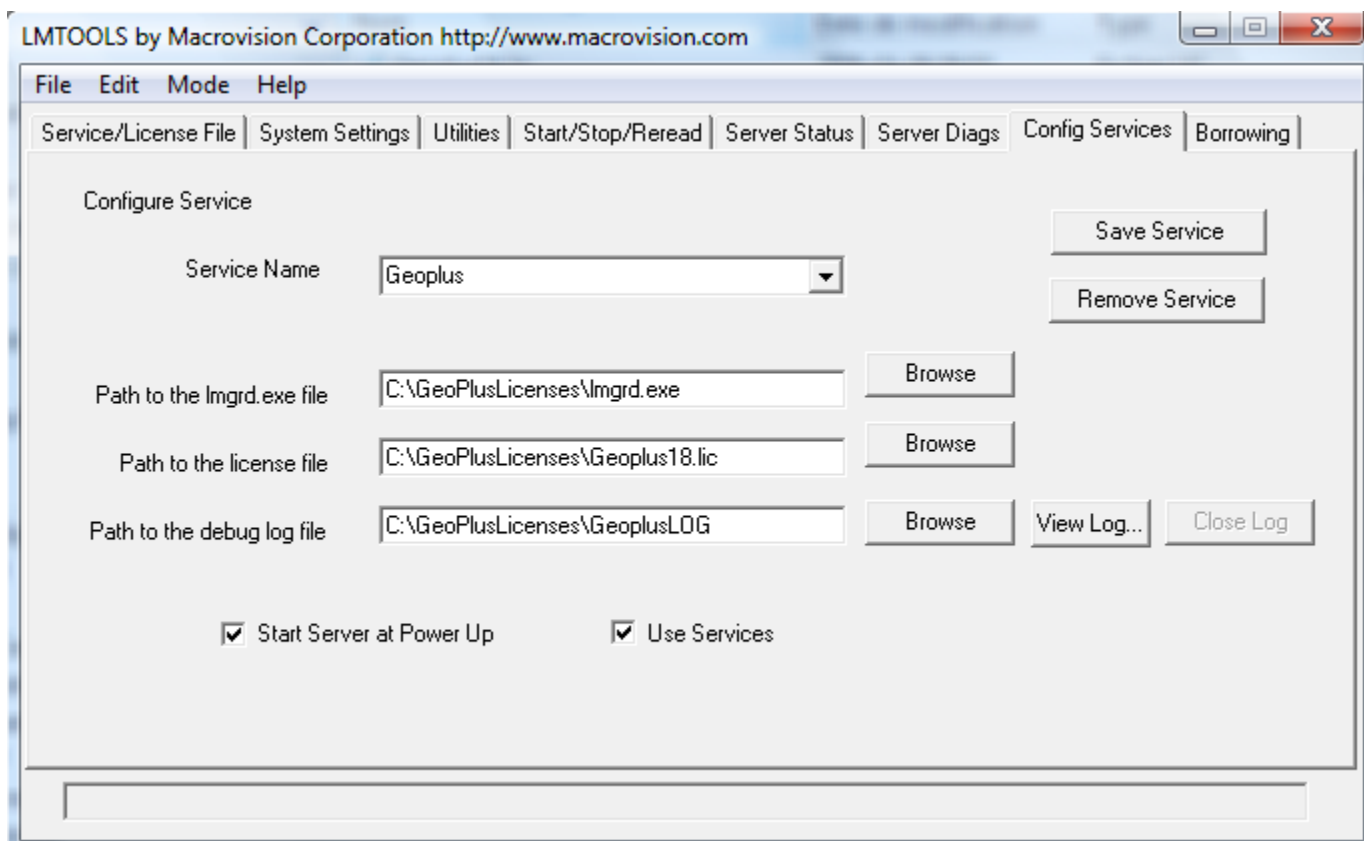
- Start the « LMTools.exe » application from the license server installation directory.



- First, using the « Service/License File » tab, make sure that the « Configuration using Services » is checked.



- Then select the « Config Services » tab.



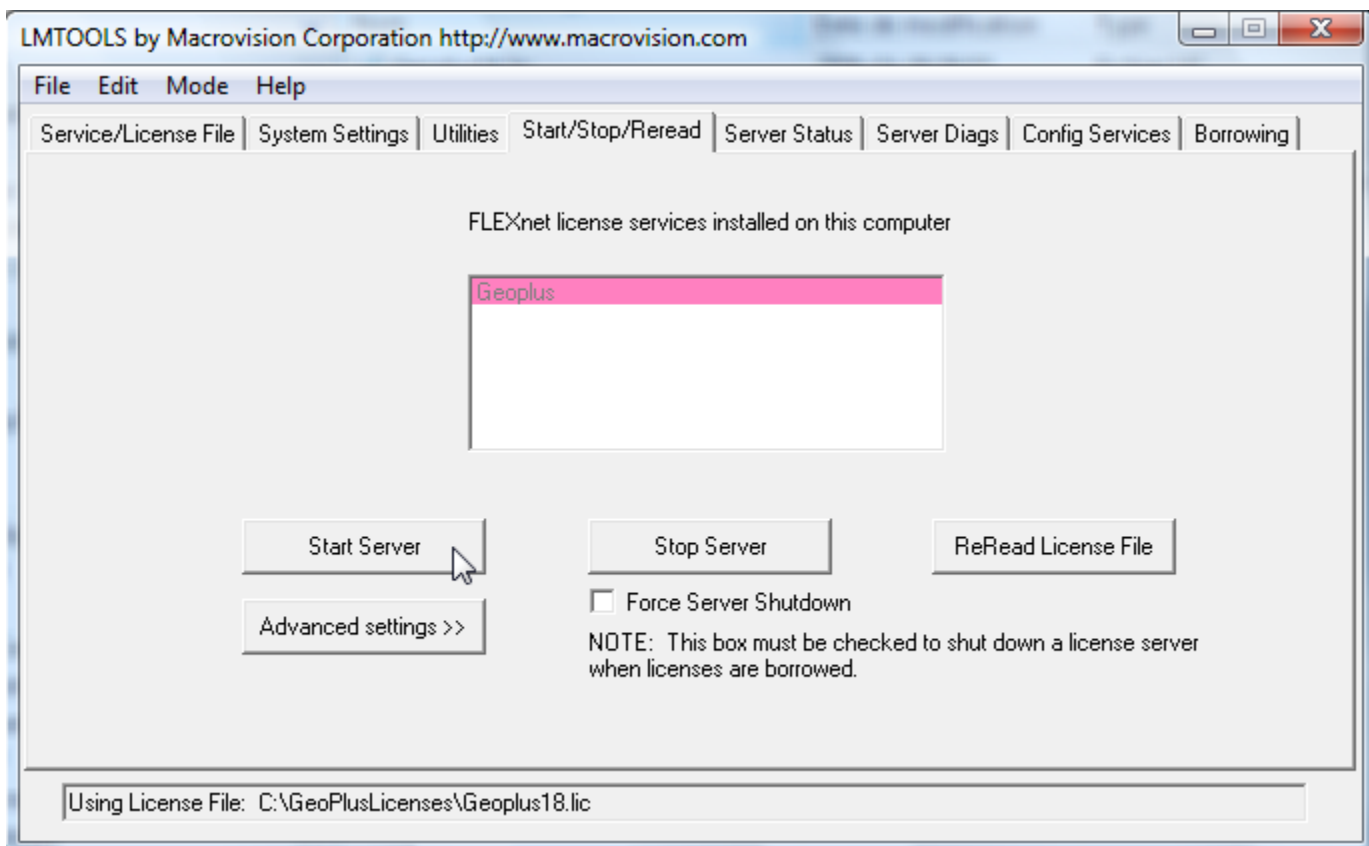
You must enter the following information :

- The service name (i.e. : GeoPlus)
- The Imgrd.exe application path (i.e. : C:\GeoPlusLicences\Imgrd.exe).
- The license file path (ex.: C:\GeoPlusLicenses\Geoplus18.lic)
- The path and name of the logfile used by the routine verification when using the licences (ex.: C:\GeoPlusLicenses\GeoplusLOG)

It is very important to check the 2 checkboxes « Use Services » and « Start Server at Power Up » so that the server is managed as a service and not an application.

Save the configurations by pressing « Save Service ».

- Finally, select the « Start/Stop/Reread » tab, select the name of the service created and press the « Start Server » button.

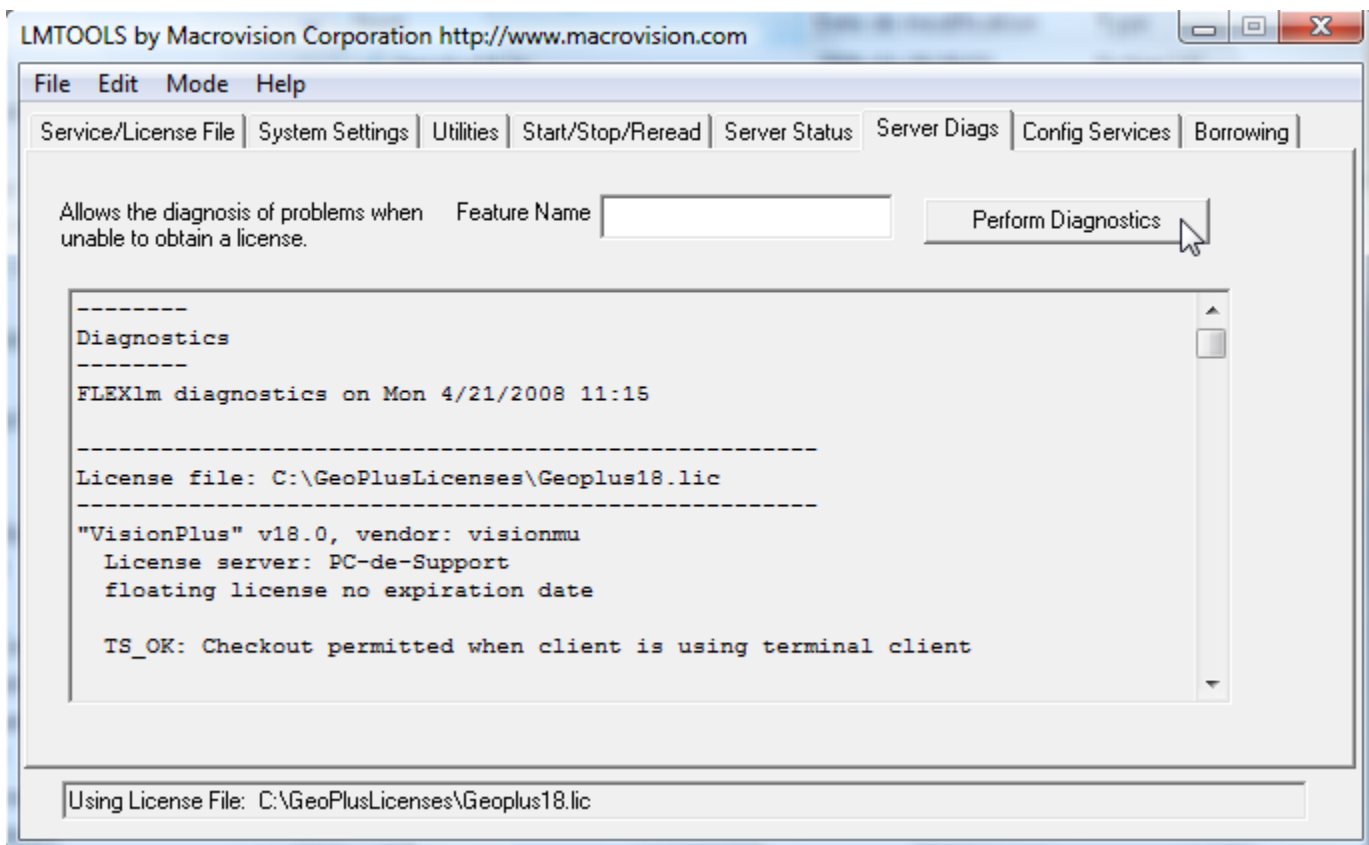


Your floating license manager is now operational. Now you can test it.

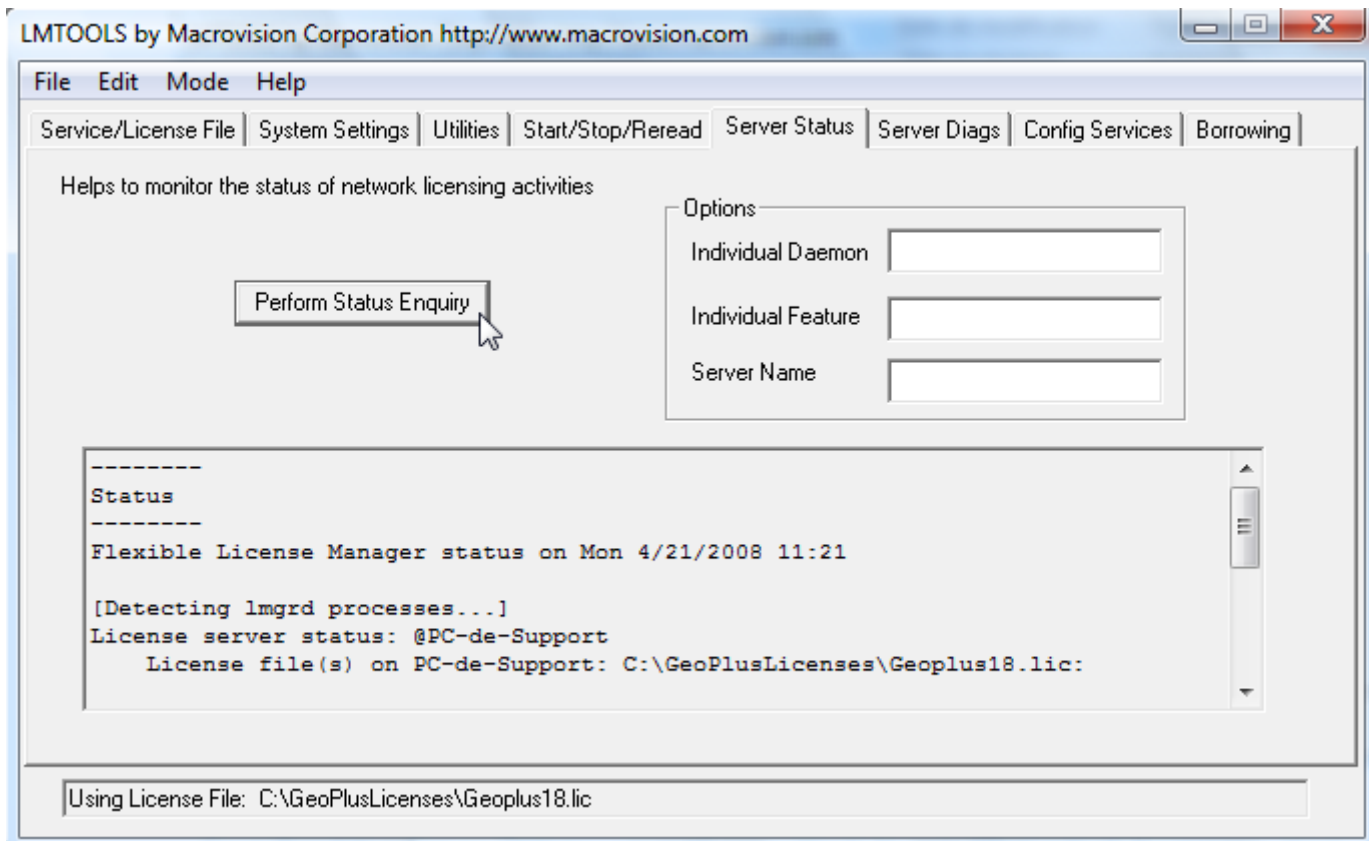
Statistics and manager testing :

If you want to test or keep statistics for your manager, follow these steps :

- Under the « Server Diags» tab, you will find the information to see if the manager is able to read the license file with the « Perform Diagnostics » function.



- You will find under the « Server Status » tab, a tool showing the actual server status. By pressing the « Perform Status Enquiry » button, the information on the service status and the active and used licences will show.



- Under the « Config Services » tab, in the log you will find all the information pertaining to the license access and the license users.